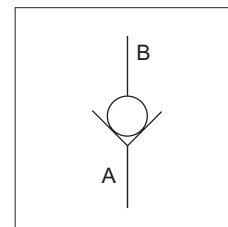


Veljan Inline Check Valves are available in three basic sizes, viz 03 (3/8"), 06 (3/4"), and 10 (1 1/4"). The sizes can be extended with the help of fittings according to a dimensional table. These zero leak valves are suitable for mounting inline with piping. Series VIC check valves are of poppet design and superior - both in design and function even at high flow conditions. These are threaded type available for maximum operating pressure up to 4500 psi (315 bar) and maximum flow up to 105 gpm (400 lpm).



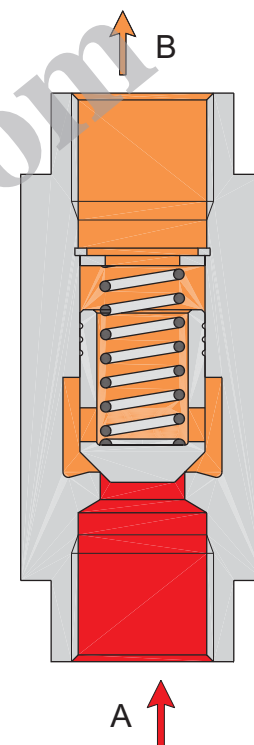
SPECIFICATIONS

General

| | | |
|----------------------------|---|-------------------------------|
| Type | : | Inline Check valve |
| Design | : | Poppet type |
| Type of mounting | : | Inline threaded mounting |
| Port sizes (nominal) | : | 3/8", 3/4", 1 1/4" |
| Direction of flow | : | A → B |
| Ambient temperature | : | -20°C...+60°C (-4°F...+140°F) |
| Special working conditions | : | Consult VELJAN |

Hydraulics

| | | |
|--------------------------|---|--|
| Operating Pressure range | : | Minimum - 0 psi (0 bar) Maximum - 4500 psi (315 bar) |
| Cracking pressure | : | 4.5 psi (0.3 bar) VIC 03 (3/8") VIC 06 (3/4") VIC 10 (1 1/4") |
| Maximum flow gpm (lpm) | : | 13 (50) 53 (200) 105 (400) |
| Nominal flow gpm (lpm) | : | 8 (30) 30 (115) 68 (260) |
| Fluid | : | Mineral oil as per DIN 51524/25 or other fluids on request |
| Fluid Temperature Range | : | -18°C...+80°C (0°F...+176°F) |
| Viscosity recommended | : | 30 cSt (180 SSU) |



ORDERING CODE

VIC 03 - B04 3 - A 1

Series

In line check valve

Size

- 03 = 3/8" Size
- 06 = 3/4" Size
- 10 = 1 1/4" Size

Thread connections

| | | |
|---------------------------------|---------------------------------|-----------------------------------|
| (For 03 size) | (For 06 size) | (For 10 size) |
| B01 = 1/4" B.S.P. ²⁾ | B04 = 1/2" B.S.P. ²⁾ | B10 = 1 1/4" B.S.P. ²⁾ |
| B02 = 3/8" B.S.P. ²⁾ | B06 = 3/4" B.S.P. ²⁾ | B12 = 1 1/2" B.S.P. ¹⁾ |
| B04 = 1/2" B.S.P. ¹⁾ | B08 = 1" B.S.P. ¹⁾ | |

Standard

Design letter

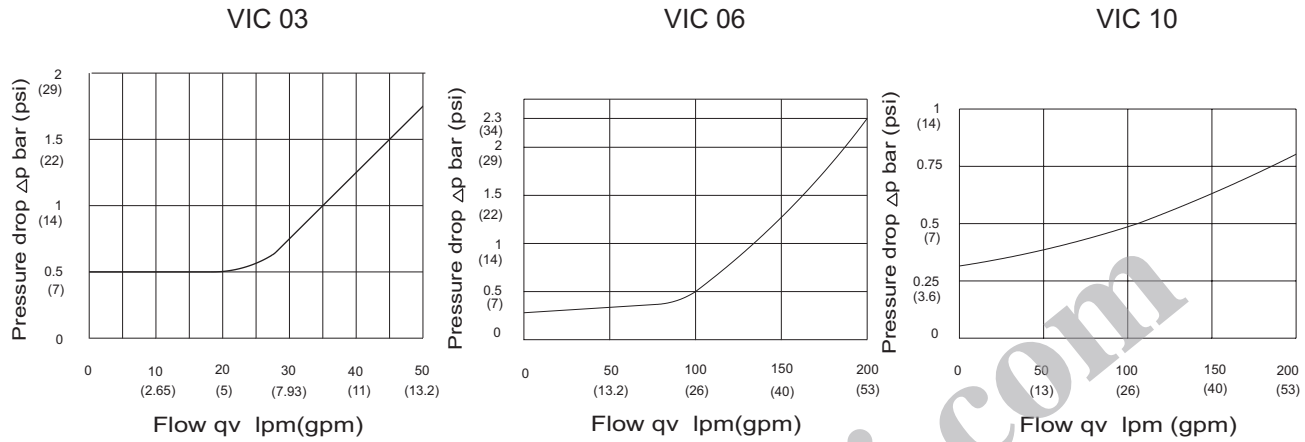
Cracking pressure

0 = No Spring

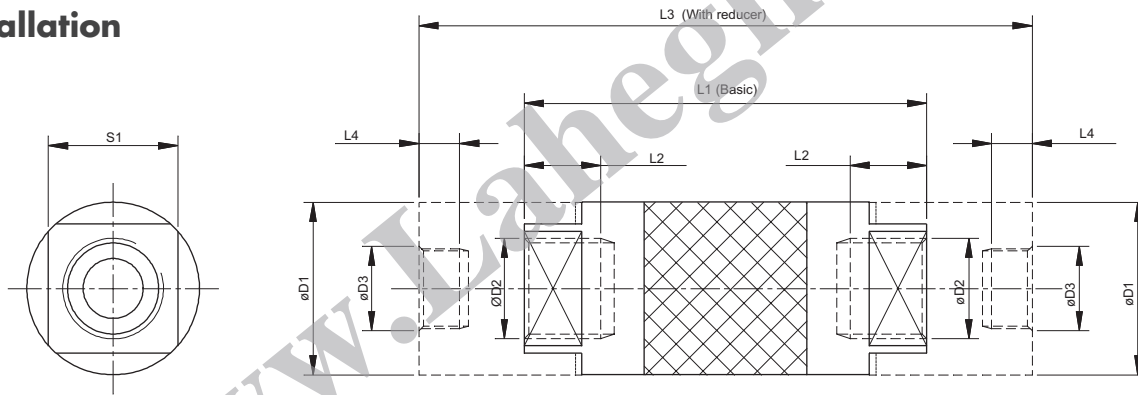
3 = 0.3 bar Spring

¹⁾-Basic size ²⁾-With reducer fittings.

$\Delta p - qv$ - Characteristics
 (Fluid 60 cSt at 40°C
 Test temp. 50°C ±10%)



Installation



| Size | | L1 | L2 | L3 | L4 | øD1 | øD2 | øD3 | S1 | Weight |
|-------------------------------|------|-------|-------|-------|-------|------|------------|------------|----------|----------|
| 03 - Basic | inch | 3.3 | 0.63 | - | - | 1.42 | 1/2" BSP | - | 1.07 A/F | 1.09 lbs |
| | mm | 84.0 | 16.0 | - | - | 36.0 | | - | 27 A/F | 0.5 kg |
| 03 - With 3/8" BSP REDUCERS | inch | - | - | 4.72 | 0.33 | 1.41 | - | 3/8" BSP | 1.07 A/F | 1.53 lbs |
| | mm | - | - | 120.0 | 8.5 | 36.0 | - | | 27 A/F | 0.7 kg |
| 03 - With 1/4" BSP REDUCERS | inch | - | - | 4.25 | 0.33 | 1.41 | - | 1/4" BSP | 1.07 A/F | 1.32 lbs |
| | mm | - | - | 108.0 | 8.5 | 36.0 | - | | 27 A/F | 0.6 kg |
| 06 - Basic | inch | 4.33 | 0.708 | - | - | 2.0 | 1" BSP | - | 1.73 A/F | 3.07 lbs |
| | mm | 110.0 | 18.0 | - | - | 50.8 | | - | 44 A/F | 1.4 kg |
| 06 - With 3/4" BSP REDUCERS | inch | - | - | 6.93 | 0.51 | 2.0 | - | 3/4" BSP | 1.73 A/F | 5.05 lbs |
| | mm | - | - | 176.0 | 13.0 | 50.8 | - | | 44 A/F | 2.3 kg |
| 06 - With 1/2" BSP REDUCERS | inch | - | - | 5.51 | 0.41 | 2.0 | - | 1/2" BSP | 1.73 A/F | 3.95 lbs |
| | mm | - | - | 140.0 | 10.5 | 50.8 | - | | 44 A/F | 1.8 kg |
| 10 - Basic | inch | 5.31 | 0.86 | - | - | 2.62 | 1 1/2" BSP | - | 2.36 A/F | 6.59 lbs |
| | mm | 135.0 | 22.0 | - | - | 66.7 | | - | 60 A/F | 3.0 kg |
| 10 - With 1 1/4" BSP REDUCERS | inch | - | - | 8.34 | 0.787 | 2.62 | - | 1 1/4" BSP | 2.36 A/F | 9.89 lbs |
| | mm | - | - | 212.0 | 20.0 | 66.7 | - | | 60 A/F | 4.5 kg |